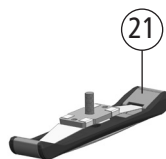
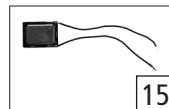
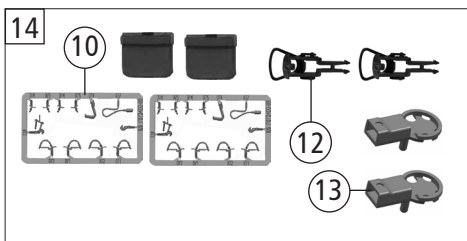
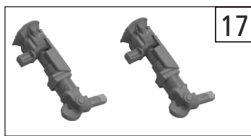
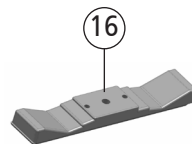
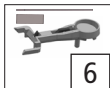
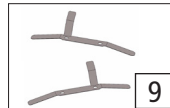
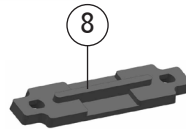
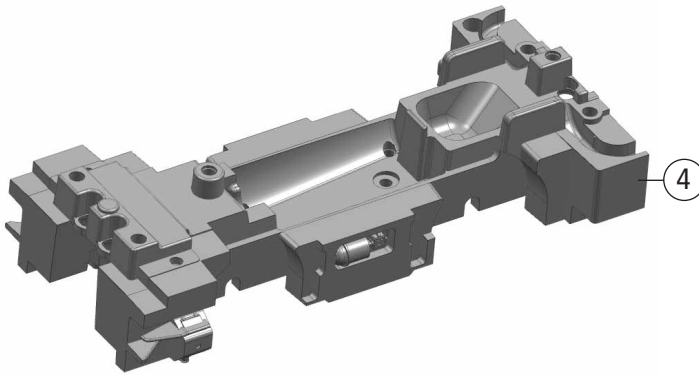
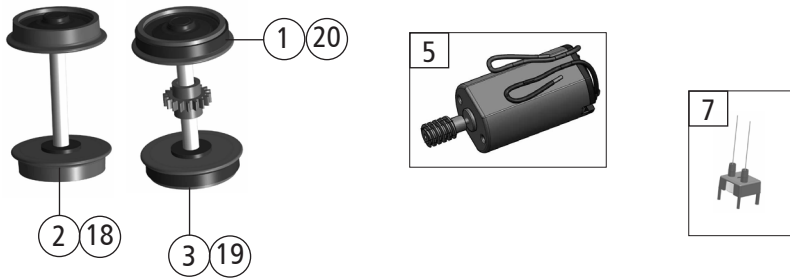


Pos. Nr. Pos.no.	Beschreibung Description	Art.-Nr. Art.no.	Preisgruppe Price bracket
1	Gehäuse kpl. Betr. Nr. 716-9 Body ass. complete Loco no. 716-9	143891	31
2	Führerhaus Driver's cab	143892	24
3	TS - Führerhaus Part set - driver's cab	143894	6
4	Platine Führerstand PCB driver's cab	143782	17
5	TS - Fenster Part set - windows	143783	9
6	Scheibenwischer L+R Wipers L+R	143895	6
7	TS - Griffe Part set - handrails	143896	13
8	TS - Gehäuse Part set body	143897	11
9	Platine PCB	143900	38
10	Umlauf Running board	143884	18
11	TS - Luftkessel Part set -	143885	7
12	Trittbrett L+R Treadle L+R	143886	5
13	TS - Lichtleiter+Linsen Part set - light conductor + lenses	143887	8
14	Griff Trittbrett Treadle handle	143889	7
15	Puffer rund gewölbt Buffer round curved	88503	5
16	Pufferbohle lang Buffer beam long	143890	6
17	Lokboden Loco floor	143767	12
18	TS - Griffe+leitungen Part set - handrails + cables	143898	14
19	Blindeckel Blind cover	143789	4
20	GF - Schraube GF - Screw	143760	4
21	GF - Schraube GF - Screw	143761	4
22	PT - Schraube PT - Screw	108137	3
23	Kästchen Pufferbohle Boxed buffer beam	143899	4

Änderungen in Konstruktion und Ausführung vorbehalten  
We reserve the right to change the construction and specification



Pos. Nr. Pos.no.	Beschreibung Description	Art.-Nr. Art.no.	Preisgruppe Price bracket
1	Haftreifen Traction tyres	40069	--
2	Radsatz o. Zahnrad o. Haftring Wheelset w/o gearwh. w/o tract. tyre	143763	11
3	Radsatz m. Zahnrad m.2 Haftringe Wheelset w. gearwheel w. 2 tr. tyres	143764	12
4	Grundrahmen Base frame	143768	13
5	Motor m. Schnecke Motor with gearwheel	143770	16
6	TS - Dig.Kupplung Part set - dig. coupling	143765	10
7	Spule kpl. Spool complete	143766	13
8	Kontakthalter Contact holder	143888	4
9	Radkontakt L+R Wheel contact L+R	143776	11
10	TS - Bremsschläuche + Zughaken Part set of brake tubes & coupling hooks	139832	7
11	Stiftführung Pin guide	143786	4
12	Standardkupplung Standard coupling	89246	6
13	Kupplungskammer Coupling reception	143790	4
14	Zurüstbeutel Bag of accesories	144002	11
15	Lautsprecher Loudspeaker	129524	14
16	Schleifergewicht Slider weight	143769	8
17	Zurüstbeutel Bag of accesories	144299	6
<b>AC - Wechselstrom</b>			
18	Radsatz o. Zahnrad o. Haftring AC Wheelset w/o gearwh. w/o tract. tyre AC	143791	10
19	Radsatz m. Zahnrad m.2 Haftringe AC Wheelset w. gearwheel w. 2 tr. tyres AC	143792	12
20	Haftreifen Traction tyres	00544007	1
21	Schleifer Slider	86030	14